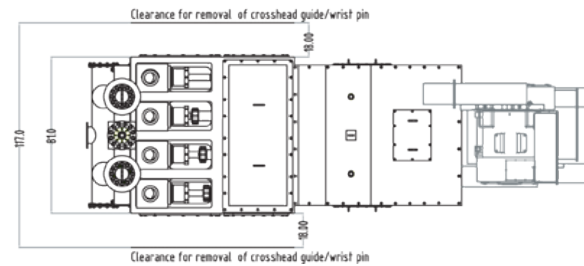
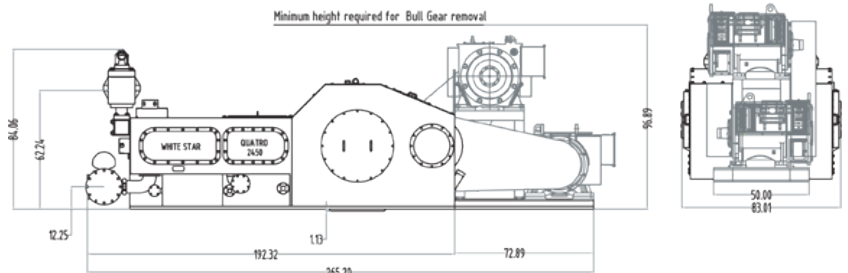


## Quatro Mud Pump [2450 HP PERFORMANCE CHART]

Stroke per min.			145	120	90	50
2450 hp	Hydraulic hp		2205	1825	1368	760
Liner size in. (mm)	Gal/stk (Liters/stk)	Max discharge pressure PSI (kg/cm <sup>2</sup> )	GPM - Gallons per minute (LPM - Liters per minute)			
9* (228.6)	11.02 (41.70)	2366 (174)	1597 (6046)	1322 (5003)	991 (3753)	551 (2085)
8* (203.2)	8.70 (32.94)	2994 (220)	1262 (4777)	1044 (3953)	783 (2965)	435 (1647)
7.5 (190.5)	7.65 (28.96)	3407 (250)	1109 (4198)	918 (3475)	688 (2606)	382 (1448)
7 (177.8)	6.66 (25.22)	3911 (287)	966 (3657)	800 (3027)	600 (2270)	333 (1261)
6 (152.4)	4.90 (18.53)	5323 (391)	710 (2687)	588 (2244)	441 (1668)	245 (927)
5 (127)	3.40 (12.87)	7500 (563)	493 (1866)	408 (1544)	305 (1158)	170 (643)
4 (101.6)	2.18 (8.24)	7500 (551)	316 (1194)	261 (988)	196 (741)	109 (412)

\*Only available with the "X" module. Rated strokes and horsepower 145 SPM @ 2450 Input horsepower. Liners available in 1/2" sizes. Hydraulic horsepower & flow rate based upon 90% mechanical efficiency and 100% volumetric efficiency. All data subject to change without notification

Max input hp	2450
Pump speed	145 SPM
Stroke length	10" (254 mm)
Max. piston size	9" (228.6 mm)
Min. piston size	4" (101.6 mm)
Fluid end working pressure	7500 PSI (51.71 Mpa)
<b>Max. flow rate</b>	1597 GPM (6046 LPM)
Width	83.5" (2,121 mm)
Length	196.5" (4,991 mm)
Height	84.5" (2,146.3 mm)
Bare pump weight	52,800 lbs (23,949 Kg)
Complete weight* (ready to run)	59,500 lbs (26,988 Kg)
Unitized weight (ready to run)	74,650 lbs (33,860 Kg)



\*Complete pump weight includes: pulsation dampeners, suction desurgers, liners, discharge manifold, suction manifold, and strainer cross